

# COVID-19 Weekly Epidemiological Update

Edition 61, published 13 October 2021

In this edition:

- [Global overview](#)
- [Special focus: Update on SARS-CoV-2 Variants of Interest and Variants of Concern](#)
- [WHO regional overviews](#)
- [Summary of the Weekly Operational Update](#)

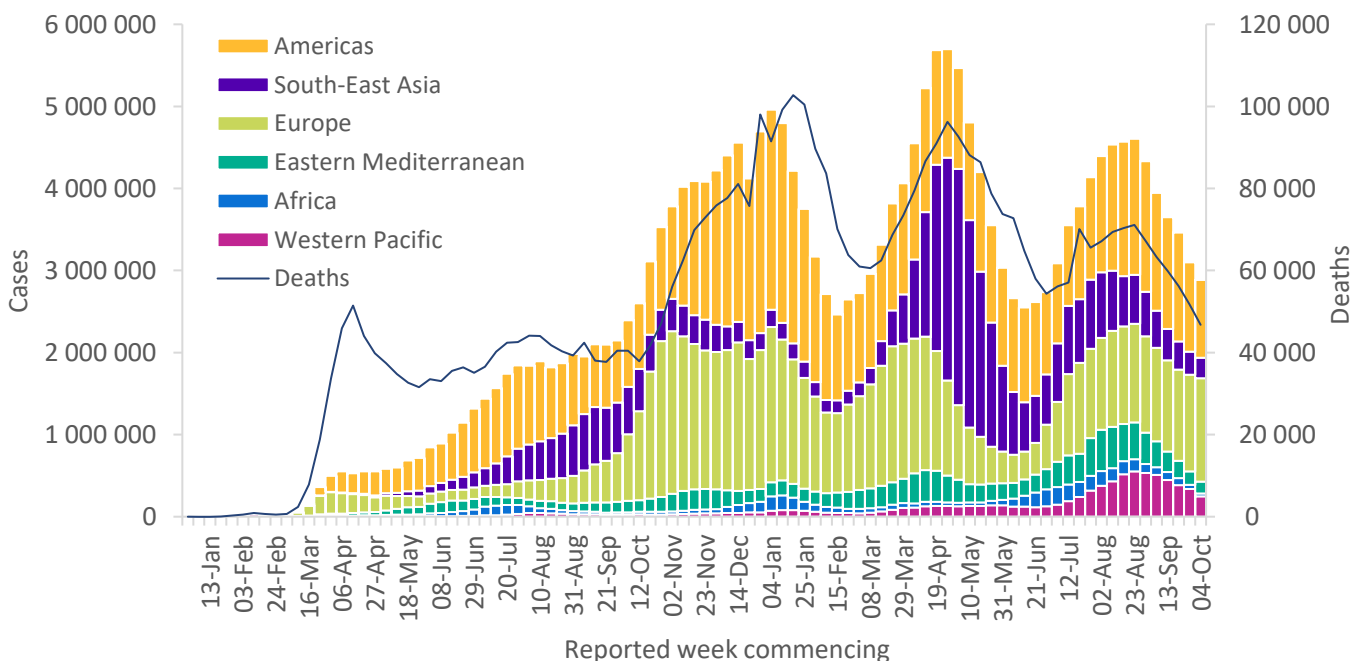
## Global overview

Data as of 10 October 2021

Globally, the numbers of weekly COVID-19 cases and deaths have continued to decline since late August (Figure 1). Over 2.8 million new cases and over 46 000 new deaths were reported during the week of 4 to 10 October 2021, representing decreases of 7% and 10% respectively, as compared to the previous week (Table 1). Apart from the European Region, which reported a 7% increase in the number of new weekly cases as compared to the previous week, all the other regions reported declines in new weekly cases. The largest decrease in new weekly cases was reported from the African Region (32%), followed by the Western Pacific Region (26%). The cumulative number of confirmed cases reported globally is now over 237 million and the cumulative number of deaths is over 4.8 million.

The number of new weekly deaths reported showed a large (>10%) decline for all regions except for the European Region, which reported an 11% increase as compared to the previous week. The largest decline in weekly deaths was reported from the Western Pacific and the African Regions, with both showing declines of 34% as compared to the previous week.

**Figure 1. COVID-19 cases reported weekly by WHO Region, and global deaths, as of 10 October 2021\*\***



\*\*See [Annex 2: Data, table and figure notes](#)

The regions reporting the highest weekly case incidence rates per 100 000 population were the European Region (135.1 new cases per 100 000 population) and the Region of the Americas (92.8 new cases per 100 000 population), and the same two regions reported the highest weekly incidence in deaths, with both reporting 1.8 per 100 000 population.

The highest numbers of new cases were reported from the United States of America (653 837 new cases; 12% decrease), the United Kingdom (249 699 new cases; similar to the number reported in the previous week), Turkey (205 266 new cases; similar to the number reported in the previous week), the Russian Federation (188 829 new cases; 14% increase), and India (139 572 new cases; 13% decrease).

Globally, no new countries, territories or areas (hereafter countries) reported cases with VOCs in the past week. As of 12 October, cases of Alpha variant have been reported from 195 countries, Beta variant from 145 countries, Gamma variant from 99 countries, and Delta variant from 191 countries across all six WHO regions.

**Table 1. Newly reported and cumulative COVID-19 cases and deaths, by WHO Region, as of 10 October 2021\*\***

| WHO Region            | New cases in last 7 days (%) | Change in new cases in last 7 days * | Cumulative cases (%)          | New deaths in last 7 days (%) | Change in new deaths in last 7 days * | Cumulative deaths (%)       |
|-----------------------|------------------------------|--------------------------------------|-------------------------------|-------------------------------|---------------------------------------|-----------------------------|
| Americas              | 949 371<br>(33%)             | -13%                                 | 91 325 885<br>(38%)           | 18 565<br>(40%)               | -14%                                  | 2 241 923<br>(46%)          |
| Europe                | 1 260 455<br>(44%)           | 7%                                   | 71 863 813<br>(30%)           | 17 198<br>(37%)               | 11%                                   | 1 360 102<br>(28%)          |
| South-East Asia       | 247 814<br>(9%)              | -11%                                 | 43 369 716<br>(18%)           | 3 636<br>(8%)                 | -16%                                  | 681 671<br>(14%)            |
| Eastern Mediterranean | 144 710<br>(5%)              | -13%                                 | 15 970 239<br>(7%)            | 3 002<br>(6%)                 | -16%                                  | 293 568<br>(6%)             |
| Western Pacific       | 249 098<br>(9%)              | -26%                                 | 8 858 812<br>(4%)             | 3 141<br>(7%)                 | -34%                                  | 120 846<br>(2%)             |
| Africa                | 33 563<br>(1%)               | -32%                                 | 6 081 759<br>(3%)             | 1 247<br>(3%)                 | -34%                                  | 148 101<br>(3%)             |
| <b>Global</b>         | <b>2 885 011<br/>(100%)</b>  | <b>-7%</b>                           | <b>237 470 988<br/>(100%)</b> | <b>46 789<br/>(100%)</b>      | <b>-10%</b>                           | <b>4 846 224<br/>(100%)</b> |

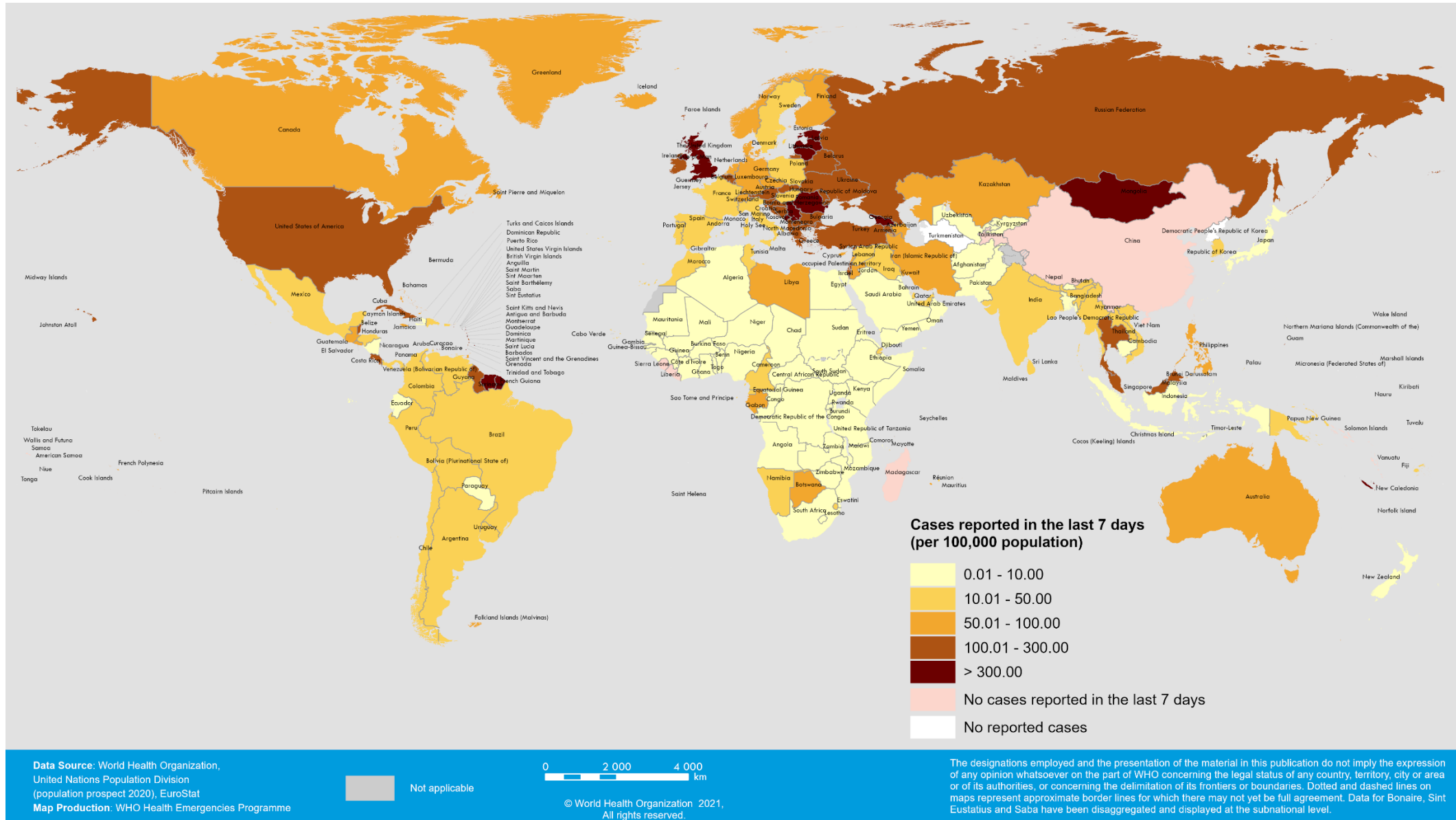
\*Percent change in the number of newly confirmed cases/deaths in past seven days, compared to seven days prior

\*\*See [Annex 2: Data, table and figure notes](#)

For the latest data and other updates on COVID-19, please see:

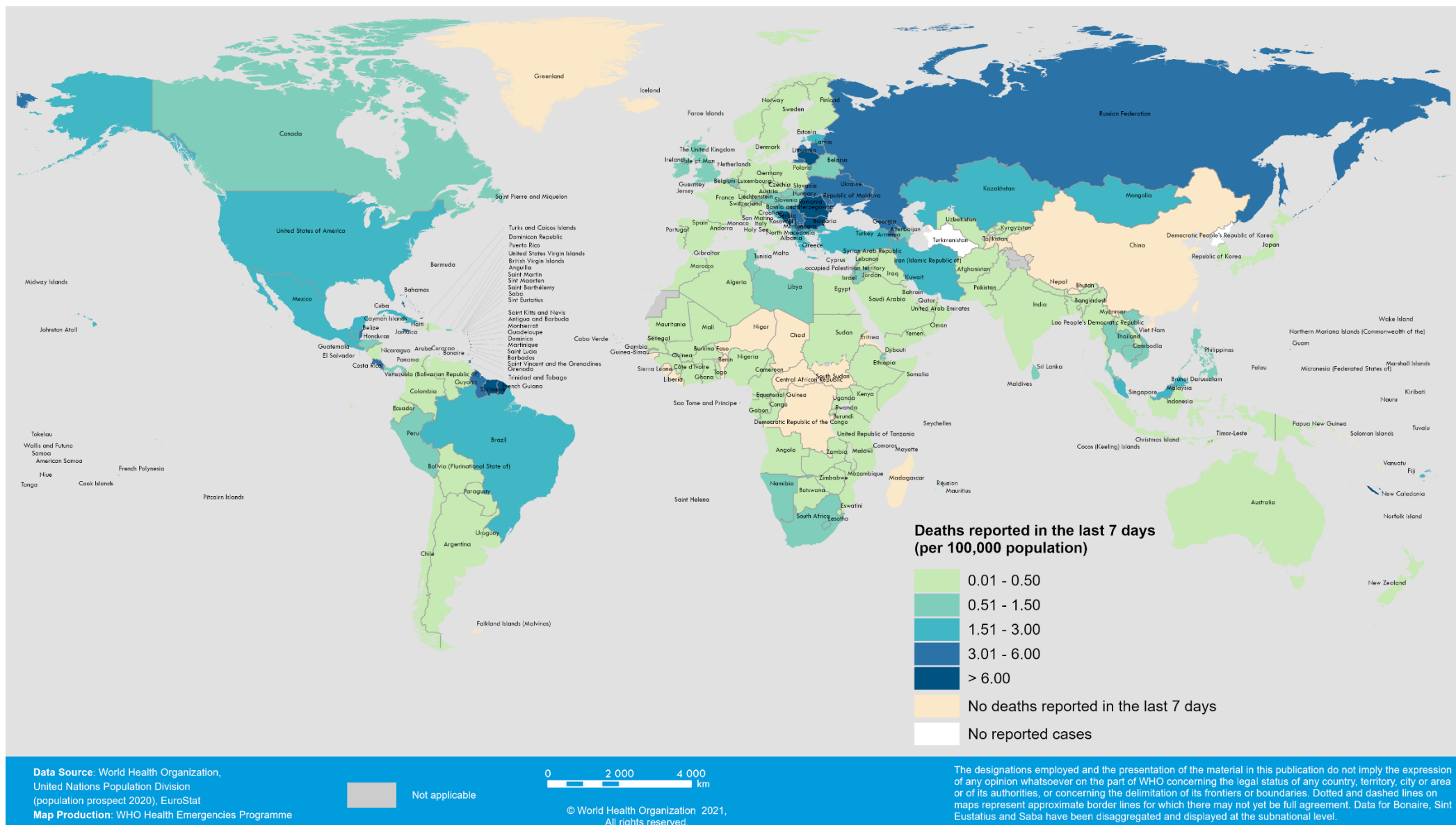
- [WHO COVID-19 Dashboard](#)
- [WHO COVID-19 Weekly Operational Update and previous editions of the Weekly Epidemiological Update](#)

Figure 2. COVID-19 cases per 100 000 population reported by countries, territories and areas, 4-10 October 2021\*\*



\*\*See Annex 2: Data, table and figure notes

Figure 3. COVID-19 deaths per 100 000 population reported by countries, territories and areas, 4 -10 October 2021\*\*



\*\*See Annex 2: Data, table and figure notes

## Special Focus: Update on SARS-CoV-2 Variants of Interest and Variants of Concern

WHO, in collaboration with national authorities, institutions and researchers, routinely assesses if variants of SARS-CoV-2 alter transmission or disease characteristics, or impact effectiveness of vaccines, therapeutics, diagnostics or public health and social measures (PHSM) applied by national authorities to control disease spread. “Signals” of potential Variants of Concern (VOCs) or Variants of Interest (VOIs) are detected and assessed based on the risk posed to global public health. As evidence becomes available, classification for VOIs or VOCs will be revised to reflect the continuous evolution of circulating variants and their changing epidemiology (see criteria for variant classification [here](#)). National authorities may choose to designate other variants of local interest/concern and are encouraged to investigate and report on the impacts of these variants. National authorities may choose to designate other variants of local interest/concern and are encouraged to investigate and report on the impacts of these variants.

As these risks evolve, WHO will continue to update lists of global VOIs and VOCs to support setting priorities for surveillance and research, and ultimately guide response strategies (for more information, please see the [Tracking SARS-CoV-2 variants](#) website). The prevalence of different variants is being monitored in light of other co-circulating variants, such as Delta.

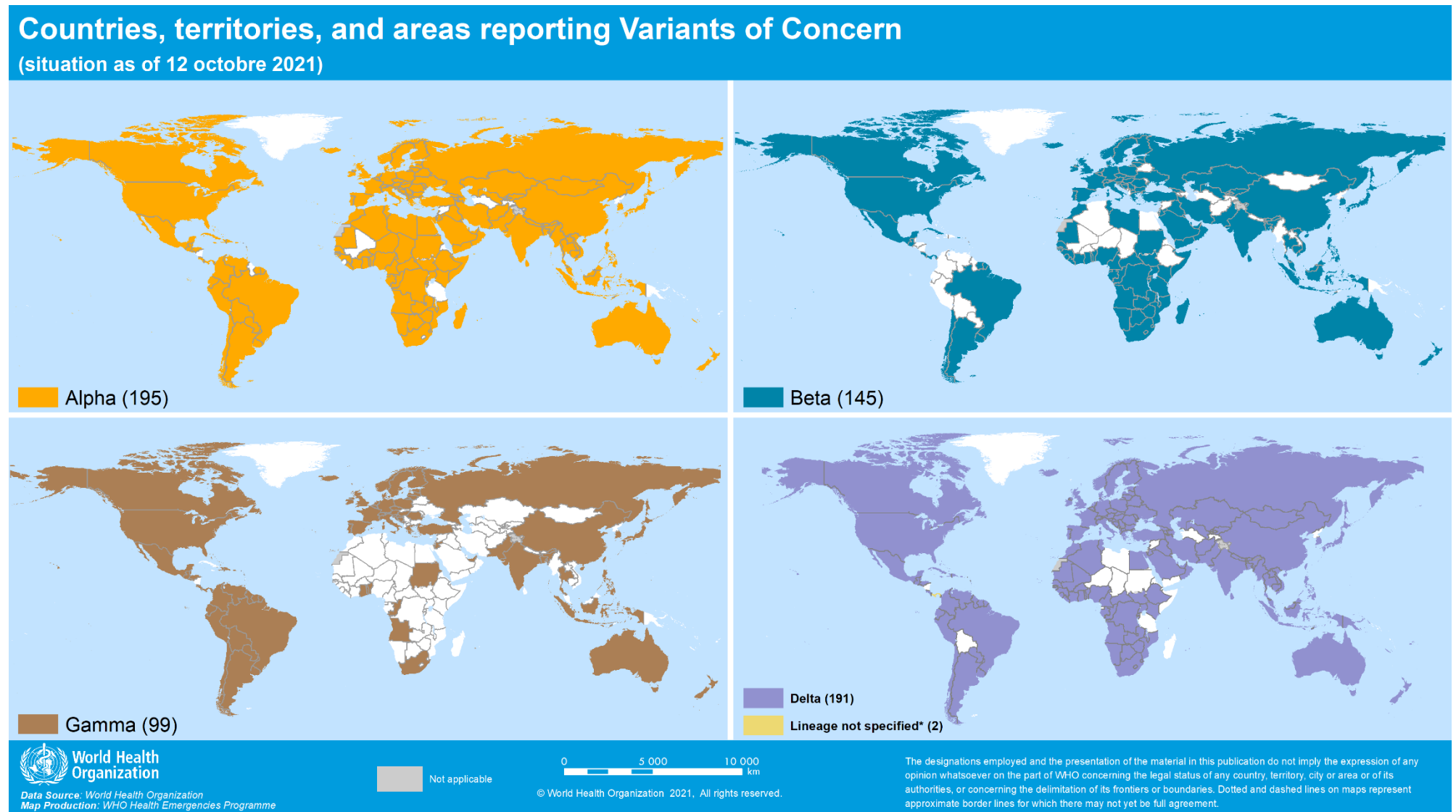
Globally, no new countries reported cases with VOCs in the past week (Figure 4, Annex 1). The current global epidemiology can be characterized by a predominance of the Delta variant, with declining prevalence of other VOCs among SARS-CoV-2 sequences reported to publicly available datasets. The global distribution should nonetheless be interpreted with due consideration of surveillance limitations, including differences in sequencing capacities, sampling strategies between countries and delays in reporting.

The inequitable access to vaccines increases the risk of emergence of new and even more threatening variants. As countries gradually resume non-essential international travel, the introduction of risk mitigation measures aiming to reduce travel-associated exportation, importation and onward transmission of SARS-CoV-2 should be based on thorough risk assessments conducted systematically and routinely.

### Additional resources

- [Tracking SARS-CoV-2 Variants](#)
- [COVID-19 new variants: Knowledge gaps and research](#)
- [Genomic sequencing of SARS-CoV-2: a guide to implementation for maximum impact on public health](#)
- [Considerations for implementing and adjusting public health and social measures in the context of COVID-19](#)

Figure 4. Countries, territories and areas reporting variants Alpha, Beta, Gamma and Delta, as of 12 October 2021\*\*



\*Includes countries/territories/areas reporting the detection of B.1.617 without further specification of lineage at this time. These will be reallocated as further details become available.

\*\*Countries/territories/areas highlighted include both official and unofficial reports of VOC detections, and do not presently differentiate between detections among travellers (e.g., at Points of Entry) or local community cases. Please see Annex 2 for further details

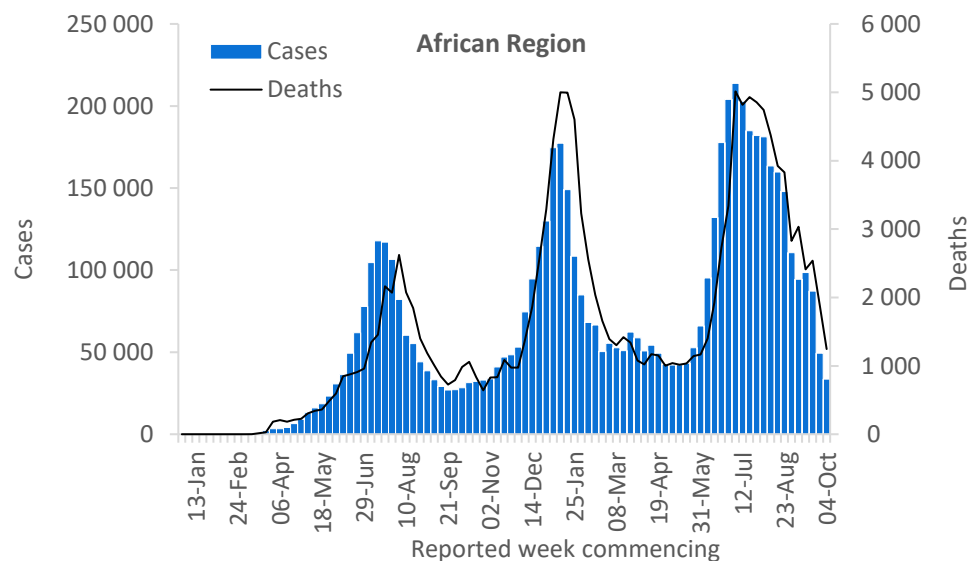


## WHO regional overviews Epidemiological week 4-10 October 2021

### African Region

Since mid-July, the African Region has shown a constant decline in the number of COVID-19 cases and deaths, with over 33 000 new cases and over 1200 new deaths reported last week, a 32% and a 34% decrease respectively as compared to the previous week. While the majority of countries (35/49; 71%) reported a decrease in new weekly cases, seven countries reported an increase, with Chad (by 54%) reporting the greatest increase. The highest numbers of new cases were reported from Ethiopia (6061 new cases; 5.3 new cases per 100 000; a 15% decrease), South Africa (5884 new cases; 9.9 new cases per 100 000; a 39% decrease), and Cameroon (3096 new cases; 11.7 new cases per 100 000; a 55% decrease).

Concerning new weekly deaths, 75% of countries in the Region reported a decline whereas there was a marked increase observed in Senegal (by 125%) and Mali (by 100%). The highest numbers of new deaths were reported from South Africa (539 new deaths; <1 new death per 100 000; a 28% decrease), Ethiopia (275 new deaths; <1 new death per 100 000; a 10% decrease), and Cameroon (58 new deaths; <1 new death per 100 000; a 36% decrease).

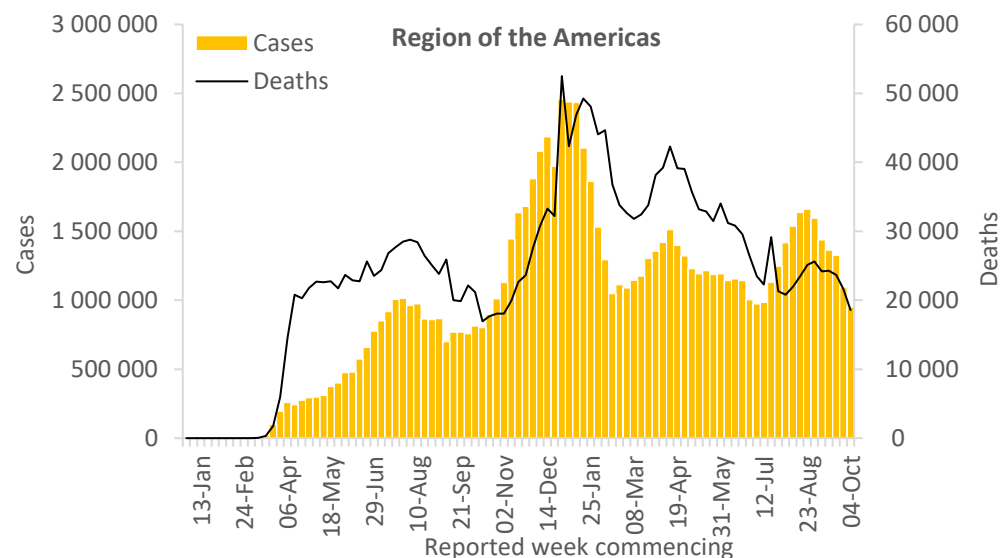


Updates from the [African Region](#)

### Region of the Americas

Since the end of August, the Region of the Americas has been reporting a declining trend in COVID-19 cases, with over 949 000 new cases reported this week, a 13% decrease as compared to previous week. Despite the declining trend in cases, 30% (17 out of 56 countries) reported an increase, with Montserrat (absolute numbers remain low), Saint Kitts and Nevis, and Saint Martin reporting the highest increase. The highest numbers of new cases were reported from the United States of America (653 837 new cases; 197.5 new cases per 100 000; a 12% decrease), Brazil (105 079 new cases; 49.4 new cases per 100 000; an 11% decrease), and Mexico (42 781 new cases; 33.2 new cases per 100 000; a 19% decrease).

For new weekly deaths, over 18 000 new deaths were reported this week, a 14% decrease compared to the previous week. The highest numbers of new deaths were reported from the United States of America (9080 new deaths; 2.7 new deaths per 100 000; a 21% decrease), Mexico (3632 new deaths; 2.8 new deaths per 100 000; an 11% increase), and Brazil (3200 new deaths; 1.5 new deaths per 100 000; a 10% decrease).

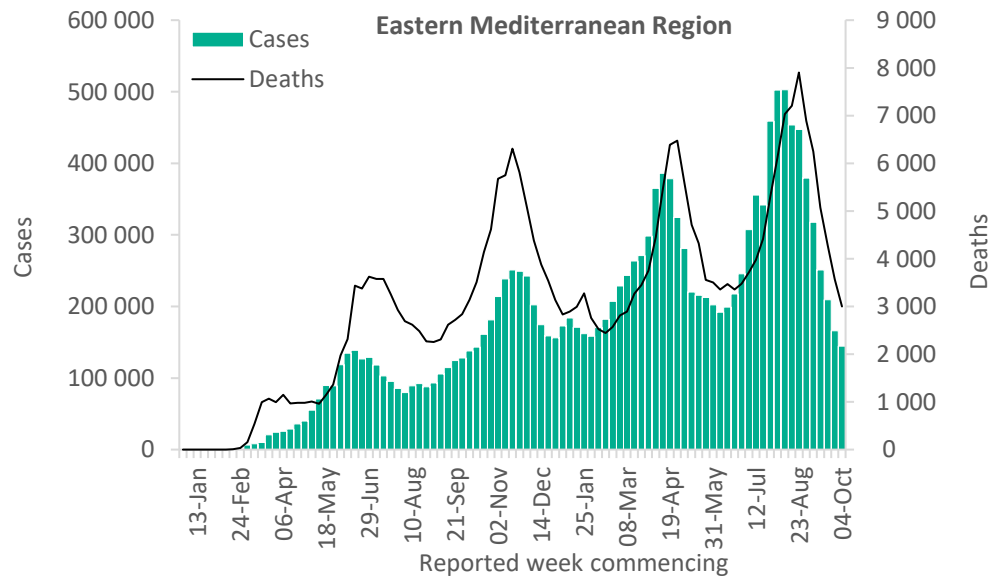


Updates from the [Region of the Americas](#)

## Eastern Mediterranean Region

During this week, the Eastern Mediterranean Region reported over 144 000 new cases and over 3000 new deaths, a 13% and a 16% decrease respectively as compared to the previous week; this follows the decline observed since mid- August 2021. While most of the countries (16/22; 73%) reported a decrease in new weekly cases, with the greatest decrease reported from Tunisia, Sudan and Somalia reported large increases in case incidence as compared to the previous week. The highest numbers of new cases were reported from the Islamic Republic of Iran (79 934 new cases; 95.2 new cases per 100 000; a 13% decrease), Iraq (14 882 new cases; 37.0 new cases per 100 000; similar figures as last week), and Pakistan (8986 new cases; 4.1 new cases per 100 000; a 21% decrease).

While most countries (14/22; 64%) in the Region reported a decline in new weekly deaths last week as compared to the previous week, Libya, Somalia and Sudan reported an increase. The highest numbers of new deaths were reported from the Islamic Republic of Iran (1490 new deaths; 1.8 new deaths per 100 000; an 18% decrease), Egypt (259 new deaths; <1 new death per 100 000; similar figures as last week), and Pakistan (256 new deaths; <1 new death per 100 000; a 17% decrease).

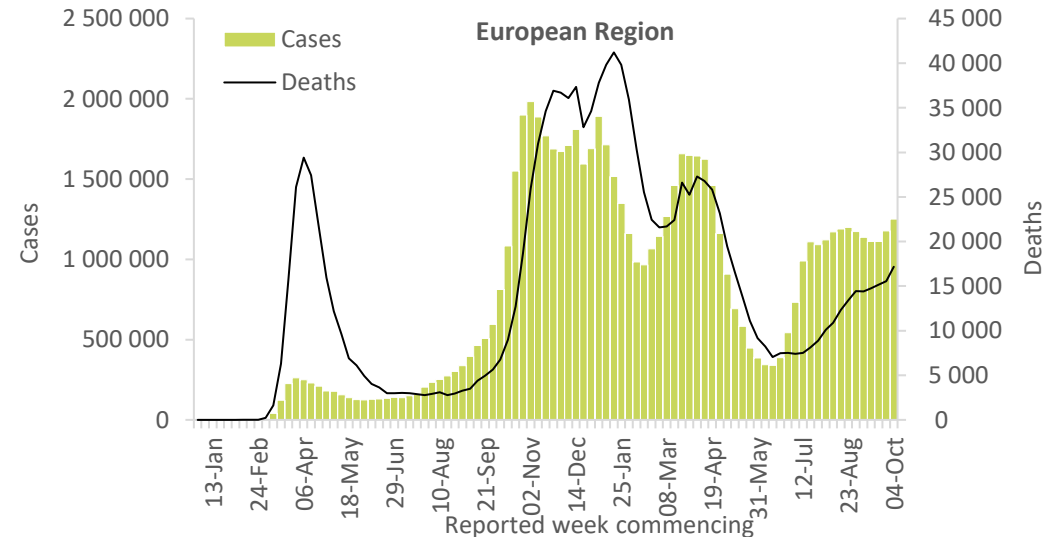


Updates from the [Eastern Mediterranean Region](#)

## European Region

Following a plateau in new weekly COVID-19 cases since mid-July, the Region reported a 7% increase compared to the previous week, with over 1.2 million new cases reported this week. Forty-six percent (28/61) of the countries showed an increase in the number of new weekly cases. The highest numbers of new cases were reported from the United Kingdom (249 699 new cases; 367.8 new cases per 100 000; similar to last week's figures), Turkey (205 266 new cases; 243.4 new cases per 100 000; similar to last week's figures), and the Russian Federation (188 829 new cases; 129.4 new cases per 100 000; a 14% increase).

During this week, over 17 000 new deaths have been reported in the Region, an 11% increase as compared to the previous week; continuing a steady increase observed since the end of June. Several countries in Eastern Europe including Czechia, Estonia, Hungary, Kyrgyzstan, Romania and Ukraine reported the greatest increase in new weekly deaths. Overall, the highest numbers of new deaths were reported from the Russian Federation (6497 new deaths; 4.5 new deaths per 100 000; an 8% increase), Romania (1854 new deaths; 9.6 new deaths per 100 000; a 54% increase), and Ukraine (1718 new deaths; 3.9 new deaths per 100 000; a 50% increase).



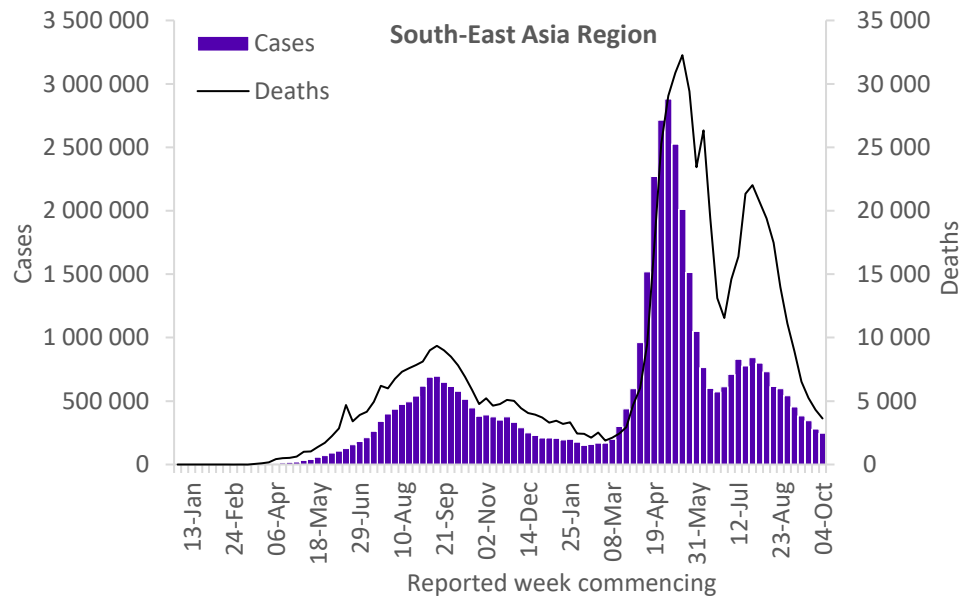
Updates from the [European Region](#)



## South-East Asia Region

The South-East Asia Region reported over 247 000 new cases and over 3600 new deaths, an 11% and a 16% decrease, respectively as compared to the previous week. All countries reported a decrease in weekly new cases and weekly new deaths this week, with the greatest decrease reported from Timor-Leste. Overall, cases and deaths have continued to decline since early August. The highest numbers of new cases were reported from India (139 572 new cases; 10.1 new cases per 100 000; a 13% decrease), Thailand (73 452 new cases; 105.2 new cases per 100 000; similar to last week's figures), and Myanmar (10 188 new cases; 18.7 new cases per 100 000; similar to last week's figures).

The highest numbers of new deaths were reported from India (1772 new deaths; <1 new death per 100 000; a 7% decrease), Thailand (677 new deaths; <1 new deaths per 100 000; a 9% decrease), and Indonesia (478 new deaths; <1 new death per 100 000; a 32% decrease).

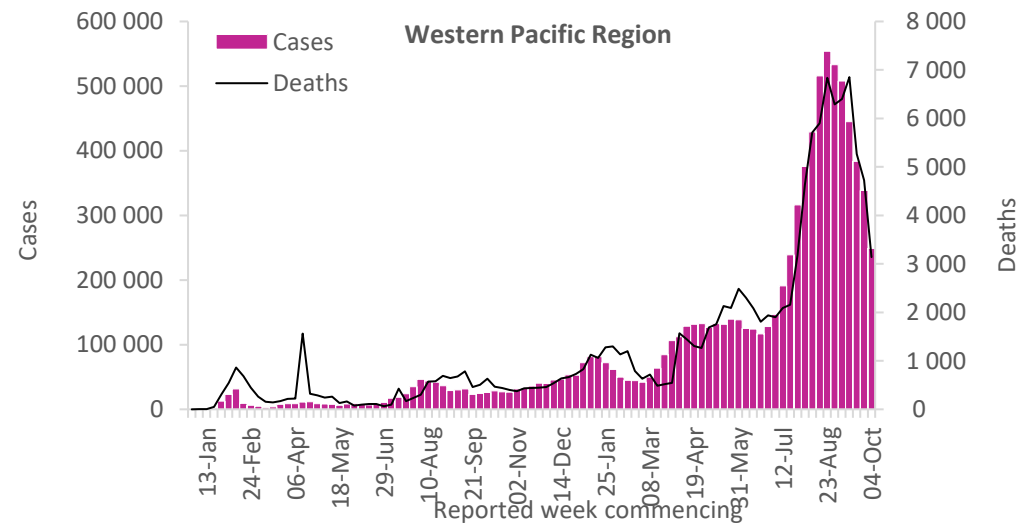


Updates from the [South-East Asia Region](#)

## Western Pacific Region

Since late August, COVID-19 cases have continued to show a declining trend in the region, with over 249 000 new cases, a 26% decrease as compared to the previous week. While most of the countries reported a decline in weekly cases this week, New Zealand, Papua New Guinea, Singapore and Australia reported an increase in cases as compared to the previous week. The highest numbers of new cases were reported from the Philippines (74 277 new cases; 67.8 new cases per 100 000; a 32% decrease), Malaysia (63 722 new cases; 196.9 new cases per 100 000; a 24% decrease), and Viet Nam (32 932 new cases; 33.8 new cases per 100 000; a 42% decrease).

Deaths continue to decline since early September, with over 3100 new deaths reported this week, a 34% decrease as compared to the previous week. The highest numbers of new deaths were reported from the Philippines (849 new deaths; <1 new death per 100 000; a 32% decrease), Viet Nam (841 new deaths; <1 new death per 100 000; a 30% decrease), and Malaysia (700 new deaths; 2.2 new deaths per 100 000; a 50% decrease).



Updates from the [Western Pacific Region](#)

## Summary of the COVID-19 Weekly Operational Update

The [Weekly Operational Update](#) (WOU) is a report provided by the COVID-19 Strategic Preparedness and Response Plan (SPRP) monitoring and evaluation team which aims to update on the ongoing global progress against the [COVID-19 SPRP 2021](#) framework. In this week's edition, published on 13 October, highlights of country-level actions and WHO support to countries include:

- Scale-up to genomic sequencing capacities and monitoring of the evolution of SARS-CoV-2 in the African Region
- Supporting health workforce with personal protective equipment (PPE) in Yemen
- Support to national coordination through establishing Public Health Emergency Operations Centres in Armenia and Kyrgyzstan
- Progress on a subset of indicators from the SPRP 2021 Monitoring and Evaluation Framework
- Roll-out of COVID-19 vaccine in Lao People's Democratic Republic
- Translating training tools to support frontline workers in Timor-Leste
- Issuing the SPRP mid-term report and updated appeal for urgent priorities and funding requirements
- Updates on WHO's financing to support countries in SPRP 2021 implementation and provision of critical supplies.

## Annex

COVID-19 confirmed cases and deaths reported in the last seven days by countries, territories and areas, and WHO Region (reported in previous issues) are now available at: <https://covid19.who.int/table>.

### Annex 1. List of countries/territories/areas reporting Variants of Concern as of 12 October 2021

| Country/Territory/Area           | Alpha | Beta | Gamma | Delta | Unspecif |
|----------------------------------|-------|------|-------|-------|----------|
| Afghanistan                      | ●     | -    | -     | ●     | -        |
| Albania                          | ●     | -    | -     | ○     | -        |
| Algeria                          | ●     | -    | -     | ●     | -        |
| Andorra                          | ○     | ○    | -     | ○     | -        |
| Angola                           | ●     | ●    | ●     | ●     | -        |
| Anguilla                         | ●     | -    | -     | ●     | -        |
| Antigua and Barbuda              | ●     | ●    | ●     | ●     | -        |
| Argentina                        | ●     | ●    | ●     | ●     | -        |
| Armenia                          | ●     | -    | -     | ●     | -        |
| Aruba                            | ●     | ●    | ●     | ●     | -        |
| Australia                        | ●     | ●    | ●     | ●     | -        |
| Austria                          | ●     | ●    | ●     | ●     | -        |
| Azerbaijan                       | ●     | -    | -     | ○     | -        |
| Bahamas                          | ●     | -    | ●     | ●     | -        |
| Bahrain                          | ●     | ●    | ●     | ●     | -        |
| Bangladesh                       | ●     | ●    | ○     | ●     | -        |
| Barbados                         | ●     | -    | ●     | ●     | -        |
| Belarus                          | ●     | -    | -     | ○     | -        |
| Belgium                          | ●     | ●    | ●     | ●     | -        |
| Belize                           | ●     | -    | ●     | ●     | -        |
| Benin                            | ●     | ●    | ●     | ●     | -        |
| Bermuda                          | ●     | ●    | -     | ●     | -        |
| Bhutan                           | ●     | ●    | -     | ●     | -        |
| Bolivia (Plurinational State of) | ●     | -    | ●     | -     | -        |
| Bonaire                          | ●     | -    | ●     | ●     | -        |
| Bosnia and Herzegovina           | ●     | ●    | ●     | ○     | -        |

| Country/Territory/Area   | Alpha | Beta | Gamma | Delta | Unspecif |
|--------------------------|-------|------|-------|-------|----------|
| Botswana                 | ○     | ●    | -     | ●     | -        |
| Brazil                   | ●     | ●    | ●     | ●     | -        |
| British Virgin Islands   | ●     | -    | ●     | ●     | -        |
| Brunei Darussalam        | ●     | ●    | -     | ●     | -        |
| Bulgaria                 | ●     | ●    | -     | ●     | -        |
| Burkina Faso             | ●     | -    | -     | ●     | -        |
| Burundi                  | ●     | ●    | -     | ●     | -        |
| Cabo Verde               | ●     | -    | -     | ●     | -        |
| Cambodia                 | ●     | ●    | -     | ●     | -        |
| Cameroon                 | ●     | ●    | -     | ●     | -        |
| Canada                   | ●     | ●    | ●     | ●     | -        |
| Cayman Islands           | ●     | ●    | ●     | ●     | -        |
| Central African Republic | ●     | ●    | -     | ●     | -        |
| Chad                     | ●     | -    | -     | -     | -        |
| Chile                    | ●     | ●    | ●     | ●     | -        |
| China                    | ●     | ●    | ●     | ○     | -        |
| Colombia                 | ●     | -    | ●     | ●     | -        |
| Comoros                  | -     | ●    | -     | -     | -        |
| Congo                    | ●     | ○    | ●     | ●     | -        |
| Costa Rica               | ●     | ●    | ●     | ●     | -        |
| Croatia                  | ●     | ●    | ●     | ○     | -        |
| Cuba                     | ●     | ●    | -     | ●     | -        |
| Curaçao                  | ●     | ●    | ●     | ●     | ●        |
| Cyprus                   | ●     | ●    | -     | ○     | -        |
| Czechia                  | ●     | ●    | ●     | ●     | -        |
| Côte d'Ivoire            | ●     | ●    | -     | ○     | -        |

| Country/Territory/Area           | Alpha | Beta | Gamma | Delta | Unspecif |
|----------------------------------|-------|------|-------|-------|----------|
| Democratic Republic of the Congo | ●     | ●    | -     | ●     | -        |
| Denmark                          | ●     | ●    | ●     | ●     | -        |
| Djibouti                         | ●     | ●    | -     | -     | -        |
| Dominica                         | ●     | -    | -     | ●     | -        |
| Dominican Republic               | ●     | -    | ●     | ●     | -        |
| Ecuador                          | ●     | -    | ●     | ●     | -        |
| Egypt                            | ●     | -    | -     | ●     | -        |
| El Salvador                      | ●     | -    | ●     | ●     | -        |
| Equatorial Guinea                | ●     | ●    | -     | -     | -        |
| Estonia                          | ●     | ●    | ○     | ○     | -        |
| Eswatini                         | ○     | ●    | -     | ●     | -        |
| Ethiopia                         | ●     | -    | -     | ●     | -        |
| Falkland Islands (Malvinas)      | ●     | ●    | -     | -     | -        |
| Faroe Islands                    | ●     | -    | ●     | -     | -        |
| Fiji                             | -     | -    | -     | ●     | -        |
| Finland                          | ●     | ●    | ●     | ●     | -        |
| France                           | ●     | ●    | ●     | ●     | -        |
| French Guiana                    | ●     | ●    | ●     | ●     | -        |
| French Polynesia                 | ●     | ●    | ●     | ●     | -        |
| Gabon                            | ●     | ●    | -     | ●     | -        |
| Gambia                           | ●     | -    | -     | ●     | -        |
| Georgia                          | ●     | ○    | -     | ●     | -        |
| Germany                          | ●     | ●    | ●     | ●     | -        |
| Ghana                            | ●     | ●    | ●     | ●     | -        |
| Gibraltar                        | ●     | -    | -     | ○     | -        |

| Country/Territory/Area           | Alpha | Beta | Gamma | Delta | Unspecif |
|----------------------------------|-------|------|-------|-------|----------|
| Greece                           | ●     | ●    | ●     | ●     | -        |
| Grenada                          | ●     | -    | -     | ●     | -        |
| Guadeloupe                       | ●     | ●    | ●     | ●     | -        |
| Guam                             | ●     | ●    | ●     | ●     | -        |
| Guatemala                        | ●     | ●    | ●     | ●     | -        |
| Guinea                           | ●     | ●    | -     | ●     | -        |
| Guinea-Bissau                    | ●     | ●    | -     | ●     | -        |
| Guyana                           | -     | -    | ●     | ●     | -        |
| Haiti                            | ●     | -    | ●     | ●     | -        |
| Honduras                         | ●     | -    | ●     | ●     | -        |
| Hungary                          | ●     | ○    | ●     | ○     | -        |
| Iceland                          | ●     | ●    | ●     | ●     | -        |
| India                            | ●     | ●    | ●     | ●     | -        |
| Indonesia                        | ●     | ●    | ○     | ●     | -        |
| Iran (Islamic Republic of)       | ●     | ●    | -     | ●     | -        |
| Iraq                             | ●     | ●    | -     | ●     | -        |
| Ireland                          | ●     | ●    | ●     | ●     | -        |
| Israel                           | ●     | ●    | ●     | ●     | -        |
| Italy                            | ●     | ●    | ●     | ●     | -        |
| Jamaica                          | ●     | -    | -     | ●     | -        |
| Japan                            | ●     | ●    | ●     | ●     | -        |
| Jordan                           | ●     | ●    | ●     | ●     | -        |
| Kazakhstan                       | ●     | ○    | -     | ●     | -        |
| Kenya                            | ●     | ●    | -     | ●     | -        |
| Kosovo <sup>[1]</sup>            | ●     | ○    | -     | ○     | -        |
| Kuwait                           | ●     | ●    | -     | ●     | -        |
| Kyrgyzstan                       | ●     | ●    | -     | ●     | -        |
| Lao People's Democratic Republic | ●     | -    | -     | ●     | -        |
| Latvia                           | ●     | ●    | ●     | ○     | -        |
| Lebanon                          | ●     | -    | -     | ●     | -        |
| Lesotho                          | -     | ●    | -     | ○     | -        |

| Country/Territory/Area | Alpha | Beta | Gamma | Delta | Unspecif |
|------------------------|-------|------|-------|-------|----------|
| Liberia                | ●     | ●    | -     | ●     | -        |
| Libya                  | ●     | ●    | -     | -     | -        |
| Liechtenstein          | ●     | -    | -     | ○     | -        |
| Lithuania              | ●     | ●    | ●     | ○     | -        |
| Luxembourg             | ●     | ●    | ●     | ●     | -        |
| Madagascar             | ●     | ●    | -     | -     | -        |
| Malawi                 | ●     | ●    | -     | ●     | -        |
| Malaysia               | ●     | ●    | -     | ●     | -        |
| Maldives               | ●     | -    | -     | ●     | -        |
| Mali                   | -     | -    | -     | ●     | -        |
| Malta                  | ●     | ○    | ●     | ○     | -        |
| Martinique             | ●     | ●    | ●     | ●     | -        |
| Mauritania             | ●     | ●    | -     | ●     | -        |
| Mauritius              | ●     | ●    | -     | ●     | -        |
| Mayotte                | ●     | ●    | -     | -     | -        |
| Mexico                 | ●     | ●    | ●     | ●     | -        |
| Monaco                 | ●     | ●    | -     | ●     | -        |
| Mongolia               | ●     | -    | -     | ●     | -        |
| Montenegro             | ●     | -    | ○     | ○     | -        |
| Montserrat             | ●     | -    | ●     | ●     | -        |
| Morocco                | ●     | ●    | -     | ●     | -        |
| Mozambique             | ●     | ●    | -     | ●     | -        |
| Myanmar                | ●     | -    | -     | ●     | -        |
| Namibia                | ●     | ●    | -     | ●     | -        |
| Nepal                  | ●     | -    | -     | ●     | -        |
| Netherlands            | ●     | ●    | ●     | ●     | -        |
| New Caledonia          | ●     | -    | -     | ●     | -        |
| New Zealand            | ●     | ●    | ○     | ○     | -        |
| Niger                  | ●     | -    | -     | -     | -        |
| Nigeria                | ●     | ●    | -     | ●     | -        |
| North Macedonia        | ●     | ●    | -     | ○     | -        |

| Country/Territory/Area                         | Alpha | Beta | Gamma | Delta | Unspecif |
|--|-------|------|-------|-------|----------|
| Northern Mariana Islands (Commonwealth of the) | ○     | -    | -     | ●     | -        |
| Norway   | ●     | ●    | ●     | ●     | -        |
| Occupied Palestinian Territory                 | ●     | ●    | -     | ●     | -        |
| Oman   | ●     | ●    | -     | ●     | -        |
| Pakistan                                       | ●     | ●    | ●     | ●     | -        |
| Panama   | ●     | ●    | ●     | ●     | ●        |
| Papua New Guinea                               | -     | -    | -     | ●     | -        |
| Paraguay                                       | ●     | -    | ●     | ●     | -        |
| Peru   | ●     | -    | ●     | ●     | -        |
| Philippines                                    | ●     | ●    | ●     | ●     | -        |
| Poland   | ●     | ○    | ●     | ●     | -        |
| Portugal                                       | ●     | ●    | ●     | ●     | -        |
| Puerto Rico                                    | ●     | ●    | ●     | ●     | -        |
| Qatar  | ●     | ●    | -     | ●     | -        |
| Republic of Korea                              | ●     | ●    | ●     | ●     | -        |
| Republic of Moldova                            | ●     | -    | -     | ●     | -        |
| Romania  | ●     | ●    | ●     | ●     | -        |
| Russian Federation                             | ●     | ●    | ○     | ●     | -        |
| Rwanda   | ●     | ●    | -     | ●     | -        |
| Réunion  | ●     | ●    | ●     | ○     | -        |
| Saba   | -     | -    | -     | ●     | -        |
| Saint Barthélemy                               | ●     | -    | -     | ●     | -        |
| Saint Kitts and Nevis                          | -     | -    | -     | ●     | -        |
| Saint Lucia                                    | ●     | -    | -     | ●     | -        |
| Saint Martin                                   | ●     | ●    | -     | ●     | -        |
| Saint Pierre and Miquelon                      | -     | -    | -     | ●     | -        |
| Saint Vincent and the Grenadines               | -     | -    | ●     | ●     | -        |
| Sao Tome and Principe                          | ●     | -    | -     | ○     | -        |
| Saudi Arabia                                   | ●     | ●    | -     | ●     | -        |
| Senegal  | ●     | ●    | -     | ●     | -        |

| Country/Territory/Area | Alpha | Beta | Gamma | Delta | Unspecif |
|------------------------|-------|------|-------|-------|----------|
| Serbia                 | ●     | -    | -     | ●     | -        |
| Seychelles             | ●     | ●    | -     | ●     | -        |
| Sierra Leone           | -     | ●    | -     | ●     | -        |
| Singapore              | ●     | ●    | ●     | ●     | -        |
| Sint Maarten           | ●     | ●    | ●     | ●     | -        |
| Slovakia               | ●     | ●    | -     | ●     | -        |
| Slovenia               | ●     | ●    | ●     | ●     | -        |
| Somalia                | ●     | ●    | -     | -     | -        |
| South Africa           | ●     | ●    | ○     | ●     | -        |
| South Sudan            | ●     | ●    | -     | ●     | -        |
| Spain                  | ●     | ●    | ●     | ●     | -        |
| Sri Lanka              | ●     | ●    | -     | ●     | -        |
| Sudan                  | ●     | ●    | ●     | -     | -        |
| Suriname               | ●     | ●    | ●     | ●     | -        |

| Country/Territory/Area      | Alpha | Beta | Gamma | Delta | Unspecif |
|-----------------------------|-------|------|-------|-------|----------|
| Sweden                      | ●     | ●    | ●     | ●     | -        |
| Switzerland                 | ●     | ●    | ●     | ●     | -        |
| Thailand                    | ●     | ●    | ●     | ●     | -        |
| Timor-Leste                 | ●     | -    | -     | ●     | -        |
| Togo                        | ●     | ●    | ●     | ●     | -        |
| Trinidad and Tobago         | ●     | -    | ●     | ●     | -        |
| Tunisia                     | ●     | ●    | -     | ●     | -        |
| Turkey                      | ●     | ●    | ●     | ●     | -        |
| Turks and Caicos Islands    | ●     | -    | ●     | ●     | -        |
| Uganda                      | ●     | ●    | -     | ●     | -        |
| Ukraine                     | ●     | ○    | -     | ○     | -        |
| United Arab Emirates        | ●     | ●    | ●     | ●     | -        |
| United Kingdom              | ●     | ●    | ●     | ●     | -        |
| United Republic of Tanzania | -     | ●    | -     | -     | -        |

| Country/Territory/Area             | Alpha | Beta | Gamma | Delta | Unspecif |
|------------------------------------|-------|------|-------|-------|----------|
| United States Virgin Islands       | ●     | ●    | -     | ●     | -        |
| United States of America           | ●     | ●    | ●     | ●     | -        |
| Uruguay                            | ●     | ●    | ●     | ●     | -        |
| Uzbekistan                         | ●     | ●    | -     | ○     | -        |
| Venezuela (Bolivarian Republic of) | ●     | -    | ●     | ●     | -        |
| Viet Nam                           | ●     | ●    | -     | ●     | -        |
| Wallis and Futuna                  | ●     | -    | -     | -     | -        |
| Yemen                              | ●     | ●    | -     | -     | -        |
| Zambia                             | ●     | ●    | -     | ●     | -        |
| Zimbabwe                           | ●     | ●    | -     | ●     | -        |

\*Newly reported in this update.

"Unspecified B.1.617" reflects countries/territories/areas reporting detection of B.1.617 without further specification of lineage at this time. These will be reallocated as further details become available.

"●" indicates that information for this variant was received by WHO from official sources.

"○" indicates that information for this variant was received by WHO from unofficial sources and will be reviewed as more information become available.

\*\*Includes countries/territories/areas reporting the detection of VOCs among travelers (e.g., imported cases detected at points of entry), or local cases (detected in the community).

Excludes countries, territories, and areas that have never reported the detection of a variant of concern.

-Kindly note that Delta has been discarded for Syrian Arab Republic upon verification.

See also [Annex 2: Data, table and figure notes](#).

## Annex 2. Data, table and figure notes

Data presented are based on official laboratory-confirmed COVID-19 case and deaths reported to WHO by country/territories/areas, largely based upon WHO [case definitions](#) and [surveillance guidance](#). While steps are taken to ensure accuracy and reliability, all data are subject to continuous verification and change, and caution must be taken when interpreting these data as several factors influence the counts presented, with variable underestimation of true case and death incidence, and variable delays to reflecting these data at global level. Case detection, inclusion criteria, testing strategies, reporting practices, and data cut-off and lag times differ between countries/territories/areas. A small number of countries/territories/areas report combined probable and laboratory-confirmed cases. Differences are to be expected between information products published by WHO, national public health authorities, and other sources. Due to public health authorities conducting data reconciliation exercises which remove large numbers of cases or deaths from their total counts, negative numbers may be displayed in the new cases/deaths columns as appropriate. When additional details become available that allow the subtractions to be suitably apportioned to previous days, graphics will be updated accordingly.

A record of historic data adjustment made is available upon request by emailing [epi-data-support@who.int](mailto:epi-data-support@who.int). Please specify the country(ies) of interest, time period(s), and purpose of the request/intended usage. Prior situation reports will not be edited; see [covid19.who.int](https://covid19.who.int) for the most up-to-date data.

The designations employed, and the presentation of these materials do not imply the expression of any opinion whatsoever on the part of WHO concerning the legal status of any country, territory or area or of its authorities, or concerning the delimitation of its frontiers or boundaries. Dotted and dashed lines on maps represent approximate border lines for which there may not yet be full agreement. Countries, territories and areas are arranged under the administering WHO region. The mention of specific companies or of certain manufacturers' products does not imply that they are endorsed or recommended by WHO in preference to others of a similar nature that are not mentioned. Errors and omissions except, the names of proprietary products are distinguished by initial capital letters.

<sup>[1]</sup> All references to Kosovo should be understood to be in the context of the United Nations Security Council resolution 1244 (1999). In the map, number of cases of Serbia and Kosovo (UNSCR 1244, 1999) have been aggregated for visualization purposes.

## Technical guidance and other resources

- [WHO technical guidance](#)
- [WHO COVID-19 Dashboard](#)
- [WHO Weekly Operational Updates on COVID-19](#)
- [WHO COVID-19 case definitions](#)
- [COVID-19 Supply Chain Inter-Agency Coordination Cell Weekly Situational Update](#)
- [Research and Development](#)
- [OpenWHO courses on COVID-19](#) in official UN languages and in [additional national languages](#)
- [WHO Academy COVID-19 mobile learning app](#)
- [The Strategic Preparedness and Response Plan](#) (SPRP) outlining the support the international community can provide to all countries to prepare and respond to the virus
- Recommendations and advice for the public:
  - [Protect yourself](#)
  - [Questions and answers](#)
  - [Travel advice](#)
- [EPI-WIN: tailored information for individuals, organizations and communities](#)